

UNIFIRE 31 PFC

Portable plasma cutting system for manual cutting



UNIFIRE 31 PFC is a single-phase 30A portable air plasma systems with high performance in relation to its low weight, the power supply weighs only 9.5 kg and cuts up to 10mm thickness.

UNIFIRE 31 PFC is equipped with Power Factor Correction meaning it utilizes connected electric power efficiently and that long extension cables up to 100m can be used without problems. UNIFIRE 31 PFC is also equipped with Flexible Voltage, which allows you to connect the machine to both 110 and 230V.

UNIFIRE 31 PFC is easy to carry, to set up and to use and is ideal for all mobile cutting applications such as steel structures at construction sites, ventilation ducts, automotive sheet, service & maintenance, etc.

Technical data:

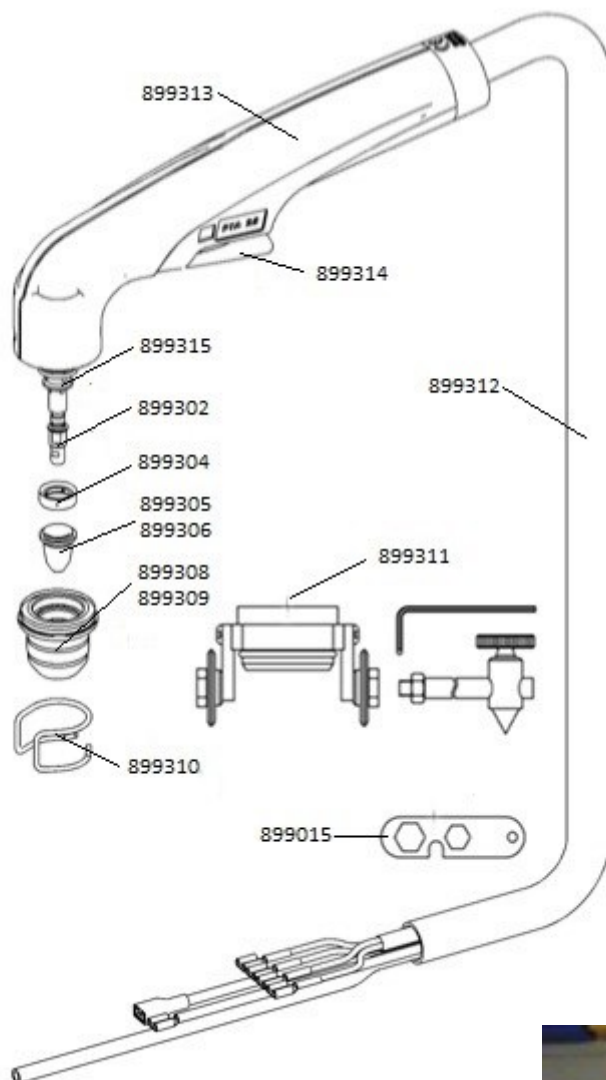
Power supply	110/230 1~ 50/60Hz
Fuse	16A@230V, 32A@110V slow blow
Maximum power	2.85 kVA*
Process power	95V, 5-30A
Duty cycle	35 %@230V 25%@110V
Power factor	0,95
Open circuit voltage	424 VDC
Protection class	IP 23S
Cooling	F
Temperature class	F
Dimensions LxWxH	440x190x320
Weight	9,5 kg
Max cutting capacity	10 mm
Quality cut	8 mm
Pressure/flow	3,5 Bar / 115 l/min

* when connected to a generator power supply the recommended minimum power of the generator is 1.5 times the maximum power of the plasma system.

Delivery scope:

- Power source
- Torch PTA 25 4m
- Consumable kit
- Mains supply cable
- Work lead cable 3m
- Air-hose
- Shoulder strap
- Users manual

Consumables and accesories PTA 25



Part No.	Denomination
454056	UNIFIRE 31 PFC with 4 m PTA 25
899315	Torch body PTA 25
899302	Electrode
899304	Swirl ring
899305	Nozzle 0.65 5-20A
899306	Nozzle 0.8 15-30A
899308	Protective cap UF 26C
899309	Protective cap UF 31 PFC
899310	Distance cutting guide
899311	Circle cutting guide PTA 25
899313	Handle PTA 25
899314	Button PTA 25
899312	Hose parcel PTA 25 4m
899015	Consumable tool
899301	Torch PTA 25 4m complete



SPT Plasmateknik AB

STATE OF THE ARC PLASMA CUTTING TECHNOLOGY

SPT Plasmateknik AB was founded in 1987 by engineers in the field of plasma cutting. The company is located in Lund, about 45 minutes from Copenhagen Airport.

With over 25 years experience in plasma cutting, we have a solid knowledge of how to make the best use of plasma cutting and gouging. With a wide product range SPT can offer systems for manual, mechanized and robotic plasma cutting that meet the needs of every application.

For more information, contact us by phone +46-46-184800 or send an email to info@spt.se. On our website www.spt.se you will find more information about our products and where you can find our distributors.



SPT Plasmateknik AB
SE 227 22 LUND

Box 4137
SWEDEN

Tel: +46 46 18 48 00
Fax +46 46 18 48 09

info@spt.se
www.spt.se