

SPEEDFIRE

Portable plasma system for manual and mechanised cutting and gouging



SPEEDFIRE is a 100A portable air-plasma system with extremely high performance in relation to its low weight, the power source weighs only 17 kg and can cut up to 35mm thickness. With air plasma systems you can cut mild steel, stainless steel, aluminum, brass, copper and other electrically conductive material.

The system is supplied for manual cutting with air-cooled hand torch PTA 121 available in lengths of 6m and 15m. For mechanized cutting system is supplied with the machine torch PTM 120 available in lengths of 6m and 12m. Full range of accessories with contact cutting shields, support carriage, circle cutting guide, etc. are available.

Technical data:

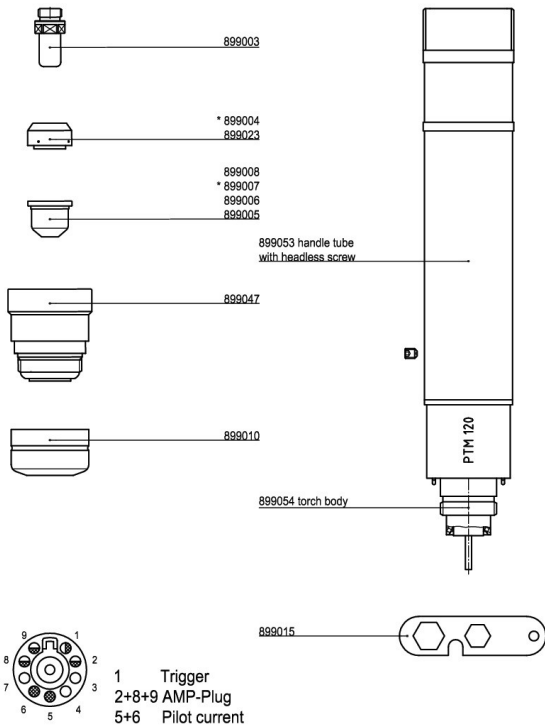
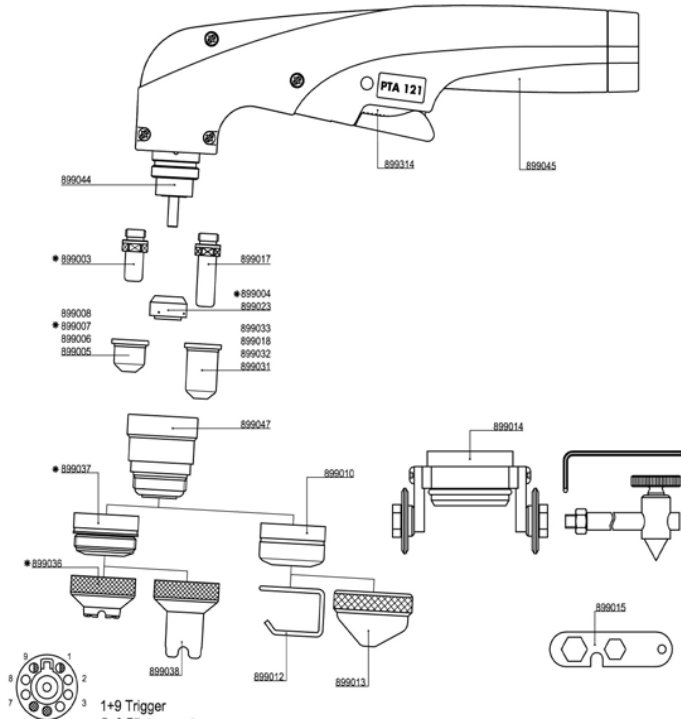
Power supply	400V, 3~ 50/60Hz
Fuse	32 A slow blow
Maximum power	14,5 kVA*
Process power	120V, 20-100A
Duty cycle	40%, @ 100A 60%, @ 80A 100%, @ 70A
Power factor	0,95
Open circuit voltage	240 VDC
Protection class	IP 23
Cooling	F
Temperature class	F
Dimensions LxWxH	560x190x320
Weight	17 kg
Max cutting capacity	35 mm
Quality cutting	30 mm
Pressure/Flow	5,0 Bar / 190 l/min

* when connected to a generator power supply the recommended minimum power of the generator is 1.5 times the maximum power of the plasma system.

Delivery scope:

- Power source
- Torch PTA 121 or PTM 120 according to order
- Consumable kit
- Mains cable with CEE-connection
- Work piece cable 3m
- Air-hose
- Shoulder strap
- Users manual
- CNC interface contact (PTM 120)

Consumables and accessories PTA 121/PTM120



Part No.	Denomination
454053	SPEEDFIRE complete with 6 m PTA121
454069	SPEEDFIRE complete with 15m PTA121
454070	SPEEDFIRE complete with 6m PTM120
454071	SPEEDFIRE complete with 12m PTM 120
899044	Torchbody PTA 121
899003	Electrode standard
899017	Electrode long
899004	Swirl ring 80-120A
899023	Swirl ring 20-80A
899005	Nozzle 1,0 20-50A
899006	Nozzle 1,2 50-90A
899007	Nozzle 1,4 90-120A
899008	Nozzle 1,6 120A
899031	Nozzle 1,0 20-50A lång
899032	Nozzle 1,2 50-90A lång
899018	Nozzle 1,4 90-120A lång
899033	Nozzle 2,5 mejsling lång
899047	Protective cup
899010	Spatter shield
899037	Spatter shield, threaded
899036	Contact cutting shield, threaded
899012	Distance cutting guide
899013	Bevel cutting guide
899038	Contact cutting shield, threaded
899014	Circle cutting guide PTA 120/121
899045	Handle PTA 121
899314	Button PTA 121
899049	Hoseparcel PTA 121 6m
899050	Hoseparcel PTA 121 15m
899015	Consumable tool
899040	Torch PTA 121 6m complete
899041	Torch PTA 121 15m complete
899053	Handle PTM 120
899054	Torchbody PTM 120
899057	Hoseparcel PTM 120 6m
899058	Hoseparcel PTM 120 12m
899051	Torch PTM 120 6m complete
899052	Torch PTM 120 12m complete

SPT Plasmateknik AB

STATE OF THE ARC PLASMA CUTTING TECHNOLOGY

SPT Plasmateknik AB was founded in 1987 by engineers in the field of plasma cutting. The company is located in Lund, about 45 minutes from Copenhagen Airport.

With over 25 years experience in plasma cutting, we have a solid knowledge of how to make the best use of plasma cutting and gouging. With a wide product range SPT can offer systems for manual, mechanized and robotic plasma cutting that meet the needs of every application.

For more information, contact us by phone +46-46-184800 or send an email to info@spt.se. On our website www.spt.se you will find more information about our products and where you can find our distributors.



SPT Plasmateknik AB
SE 227 22 LUND

Box 4137
SWEDEN

Tel: +46 46 18 48 00
Fax: +46 46 18 48 09

info@spt.se
www.spt.se